

KANSEPT



Kansept

2021

PRODUCT GUIDE



"We Don't Just Make Knives, We Make Knives Better"

“Kansept” is the re-formation of the meaning of "Concept". The structure of knives and ways of making knives, are much of a muchness. What makes us stand out from the crowd is our ability to innovate. Just like the design of our logo, which derives from the image of UFOs that travel from space to space and leap into the future. This means Kansept will always keep pace with the times and constantly absorb fresh and innovative elements and finally put them into knife designs.

Located in Yangjiang, the city of the knife in China, Kansept has always claimed a pioneering spirit; an openness to the world; talent; cutting-edge technologies and design. Making the best use of our natural advantages, Kansept offers the best quality guaranteed knives, at a very affordable price. We have a selected a skilled production team with more than 20 years of experience in the knife industry. While at the same time, we also set up a strong Research & Development department to continuously design the most ergonomic, innovative and high quality in-house knives. We not only design our own knives, but also strive to bring in the most innovative designs from respected foreign and new knife makers.

Kansept carries the responsibility to extract the very best from the materials currently available and to bring them together in a knife which is both aesthetic and practical. With the most advanced equipment available , Kansept is capable of manufacturing knives to the highest quality. Each component is machined, finished and meticulously fitted, both by hand and advanced machining in an exquisite blend of craftsmanship and aesthetics. OEM and ODM are always welcome. Working with us will greatly help cut down your cost and win new markets.

If you have any questions, please feel free to email us at info@kanseptknives.com

Justin Lundquist

Designer

Justin Lundquist received his first knife from his mother at the age of 4. It was a small fixed blade to go with his fishing gear and tackle box. He has been fascinated with them ever since.

He accumulated a small collection of inexpensive production knives over the next few years. Some were family gifts and some came from fairground prizes. He was always drawn to the wide range of shapes and designs while still being a functional utilitarian tool.

After graduating college with a degree in Fine Art Photography and working in that industry for over a decade, He stumbled into the world of full custom handmade knives. It was a rabbit hole he couldn't resist. He gathered as much information as he could and began to teach himself knife design and making.

In 2013 Justin began slowly making his own knives. He loves the creative process of designing and physically building a beautiful functional tool that can be carried and used daily. He strives to create functional EDCs that have clean lines, shapes and transitions. Mixing classic and modern he hopes to make designs that last and stand the test of time.



Reverie 2025

The Reverie is a good example of how I like to mix classic and modern. The lines of the Reverie are somewhat classic. However, there are more modern additions like my symmetrical out the front flipper tab, the bolster lock, my 5 slot pattern and the materials. This is also the first time I have designed a bolster lock or used a hidden lanyard pin. Both of these design elements are pretty awesome. The bolster lock not only looks great visually but it also acts as an overtravel stop for the lockbar so that you cannot overextend it. The hidden stop pin allows those who like lanyards to use them and those who don't like them, don't have to see a big lanyard hole going through the knife. I am really happy with the way all the elements came together for this design. I think it looks good and feels great in hand.

REVERIE 2025

K2025A1 **NEW**

Blade Length	2.92"/74.2mm
Overall Length	4.63"/117.5mm
Blade Thickness	0.14" / 3.5mm
Weight	3.25oz/92g
Blade Steel	S35VN
Handle Material	Black G10 + Titanium Bolster



K2025A2 **NEW**

Blade Length	2.92"/74.2mm
Overall Length	4.63"/117.5mm
Blade Thickness	0.14" / 3.5mm
Weight	3.25oz/92g
Blade Steel	S35VN
Handle Material	Shred Carbon Fiber + Titanium Bolster



K2025A3 **NEW**

Blade Length	2.92"/74.2mm
Overall Length	4.63"/117.5mm
Blade Thickness	0.14" / 3.5mm
Weight	3.25oz/92g
Blade Steel	S35VN
Handle Material	Arctic Storm Carbon Fiber + Titanium Bolster



Ostap Hel Design

Designer

Ostap Hel is a full time designer and custom knives & gear maker from Poland.

Since he was a child he has always loved drawing things - probably because of genes. His father is a graduate of Academy of Arts, so first years of his life he spent with his parents in dorm surrounded by students from all kind of art faculties.

Knives in his life appeared when he was a teenager, due to his growing interests in Middle Ages and all kind of weapons and knights equipment. He spent a year in armorer workshop as an apprentice where he has learned basics of traditional medieval metalworking methods. Since then he has been looking for more reliable, repeatable and precise way of creating things than using basic hand tools - that's how he own workshop and journey with manual machining and CNC was started.

All his designs are based on basic geometry, smooth transitions and Golden Ratio concept. However in his collaborations he always try to experiment with new shapes and ideas to fit his partner's company unique style and manufacturing capabilities.



Kratos 1024

Model Kratos was inspired by ancient Greek sword called Kopis. It has very characteristic curved, wide blade and comfortable full grip handle. Ostap mixed those features with modern style dual grinds and futuristic handle inlays. Name comes from Greek Mythology. Kratos, son of titans was representation of strength and power there.

KRATOS 1024

K1024A1 **NEW**

Blade Length	3.79"/96.3mm
Overall Length	8.69"/220.6mm
Blade Thickness	0.157" / 4.0mm
Weight	5.2oz/148g
Blade Steel	Satin S35VN
Handle Material	Titanium + Shred Carbon Fibery



K1024A2 **NEW**

Blade Length	3.79"/96.3mm
Overall Length	8.69"/220.6mm
Blade Thickness	0.157" / 4.0mm
Weight	5.3oz/150g
Blade Steel	Stonewashed S35VN
Handle Material	Titanium + Green G10



K1024A3 **NEW**

Blade Length	3.79"/96.3mm
Overall Length	8.69"/220.6mm
Blade Thickness	0.157" / 4.0mm
Weight	5.7oz/163g
Blade Steel	Satin S35VN
Handle Material	Titanium + Timascus



Nick Swan

Designer

As a retired law enforcement officer, Nick Swan needed a knife that he could trust his life on, not only as a last line of defense but as an everyday tool. He doesn't believe in safe queens and refuses to own a knife that he won't actually use.



2026B Wedge (Back Lock) 2020S Bevy (Slip Joint)

The Bevy/Wedge were designed with that little old slipjoint grandpa always had in his pocket in mind. Just big enough to complete any task thrown at it. Simple, Solid, Reliable.

2026B WEDGE B 2020S BEVY

K2026S1 NEW

Blade Length	2.45"/62.2mm	Weight	2.49oz/70.5g
Overall Length	7.06"/179.3mm	Blade Steel	S35VN
Blade Thickness	0.12" / 3.0mm	Handle Material	Carbon Fiber



T2026B2 NEW

Blade Length	2.45"/62.2mm	Weight	2.49oz/70.5g
Overall Length	5.65"/143.5mm	Blade Steel	154CM
Blade Thickness	0.12" / 3.0mm	Handle Material	Red G10



T2026S1 NEW

Blade Length	2.45"/62.2mm	Weight	2.49oz/70.5g
Overall Length	7.06"/179.3mm	Blade Steel	154CM
Blade Thickness	0.12" / 3.0mm	Handle Material	Black G10



K2026B1 NEW

Blade Length	2.45"/62.2mm	Weight	2.49oz/70.5g
Overall Length	5.65"/143.5mm	Blade Steel	S35VN
Blade Thickness	0.12" / 3.0mm	Handle Material	Twill Carbon Fiber



T2026S3 NEW

Blade Length	2.45"/62.2mm	Weight	2.49oz/70.5g
Overall Length	7.06"/179.3mm	Blade Steel	154CM
Blade Thickness	12" / 3.0mm	Handle Material	G10



T2026B1 NEW

Blade Length	2.45"/62.2mm	Weight	2.49oz/70.5g
Overall Length	5.65"/143.5mm	Blade Steel	154CM
Blade Thickness	0.12" / 3.0mm	Handle Material	Black G10



Sheepdog Knives

Designer

Chris Conaway has been making knives and founded Sheepdog Knives in 2011. He started with fixed blades then moved on to making folders in 2013. Chris designs and makes custom knives that showcase his top-of-the-line creativity and attention to detail.



Convict 1023

The Convict is a design he came up with when he wanted to make a warrencliff style of blade. The blade shape and straight edge make a great cutting knife for all tasks and self defense.

CONVICT 1023

K1023A1 **NEW**

Blade Length	3.3"/83.82mm
Overall Length	7.52"/191.1mm
Blade Thickness	0.14" / 3.5mm
Weight	4.06oz/115g
Blade Steel	S35VN Blade
Handle Material	Titanium



K1023A2 **NEW**

Blade Length	3.3"/83.82mm
Overall Length	7.52"/191.1mm
Blade Thickness	0.14" / 3.5mm
Weight	4.06oz/115g
Blade Steel	Black stonewashed S35VN
Handle Material	Black Ti-coated Titanium



K1023A3 **NEW**

Blade Length	3.3"/83.82mm
Overall Length	7.52"/191.1mm
Blade Thickness	0.14" / 3.5mm
Weight	4.06oz/115g
Blade Steel	S35VN Blade
Handle Material	Blue Anodized Titanium



K1023D1 **NEW**

Blade Length	3.3"/83.82mm
Overall Length	7.52"/191.1mm
Blade Thickness	0.14" / 3.5mm
Weight	4.06oz/115g
Blade Steel	Damascus Blade
Handle Material	Titanium



Damascus Blade

Rolf Helbig

Designer

Like many young boys, Rolf Helbig carried a pocket knife. In 1977 when he started his first job, helping his father in the kitchen, his chef knife was the most important tool. At that time knife steels were changing, and by doing a little research, Rolf found metallurgy to be a very interesting field, and he learned a knife is not just a knife.

He came up with the designs for the Foosa and the Weasel because he wanted to return to a time when the knife was a simple, common sense cutting tool.



Weasel 2020A

Rolf came up with the designs for the Foosa and the Weasel because he wanted to return to a time when the knife was a simple, common sense cutting tool. The Weasel uses a more modern handle design along with a similar classic blade type which is modest, ergonomic, and extraordinary functional.

WEASEL 2020A

T2020A3 **NEW**

Blade Length	3.12"/79.2mm	Overall Length	7.06"/179.3mm	Blade Thickness	0.12" / 3.0mm
Weight	3oz/85g	Blade Steel	154CM	Handle Material	Shred Carbon Fiber



T2020A4 **NEW**

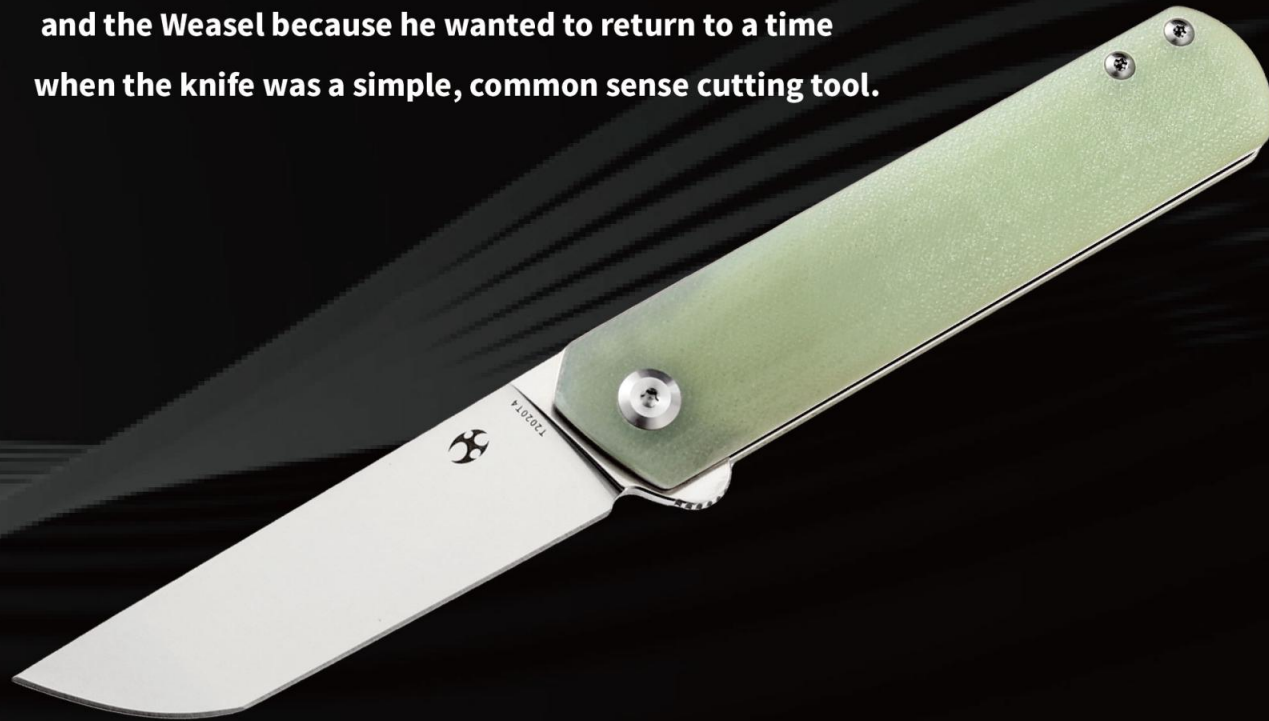
Blade Length	3.12"/79.2mm	Overall Length	7.06"/179.3mm	Blade Thickness	0.12" / 3.0mm
Weight	3oz/85g	Blade Steel	154CM	Handle Material	G10



Rolf Helbig

Designer

Like many young boys, Rolf Helbig carried a pocket knife. In 1977 when he started his first job, helping his father in the kitchen, his chef knife was the most important tool. At that time knife steels were changing, and by doing a little research, Rolf found metallurgy to be a very interesting field, and he learned a knife is not just a knife. He came up with the designs for the Foosa and the Weasel because he wanted to return to a time when the knife was a simple, common sense cutting tool.



Foosa 2020T

Rolf came up with the designs for the Foosa and the Weasel because he wanted to return to a time when the knife was a simple, common sense cutting tool. With the Foosa he focused on a classic neutral knife handle combined with a time proven classic blade type. The resulting knife is modest, ergonomic, and extraordinary functional.

FOOSA 2020T

T2020T2 **NEW**

Blade Length	3.06"/77.7mm
Overall Length	7.06"/179.3mm
Blade Thickness	0.12" / 3.0mm
Weight	3oz/85g
Blade Steel	154CM
Handle Material	Green Micarta



KT2020T3 **NEW**

Blade Length	3.06"/77.7mm
Overall Length	7.06"/179.3mm
Blade Thickness	0.12" / 3.0mm
Weight	3oz/85g
Blade Steel	154CM
Handle Material	Carbon Fiber



T2020T4 **NEW**

Blade Length	3.06"/77.7mm
Overall Length	7.06"/179.3mm
Blade Thickness	0.12" / 3.0mm
Weight	3oz/85g
Blade Steel	154CM
Handle Material	G10



T2020T5 **NEW**

Blade Length	3.06"/77.7mm
Overall Length	7.06"/179.3mm
Blade Thickness	0.12" / 3.0mm
Weight	3oz/85g
Blade Steel	154CM
Handle Material	Shred Carbon Fiber



Max Tkachuk

Designer

Max Tkachuk is a Ukrainian graphic and industrial designer. From childhood he was fascinated knives. He uses his experience and skills to create functional and aesthetic knives. In his work he is guided by the principle "less is more".



Hazakura 1019

The Hazakura is a lightweight and compact EDC knife inspired by tantō. At the same time, its blade is long enough for the most diverse tasks. This knife combines the aesthetic of antique tantō and contemporary materials

HAZAKURA 1019

K1019A1 **NEW**

Blade Length	3.54" / 89.9mm
Overall Length	8.08" / 206.2mm
Blade Thickness	0.118" / 3.0mm
Weight	3.63oz / 103g
Blade Steel	Black Ti-coated S35VN
Handle Material	Titanium + Shred Carbon Fiber Inlay



K1019A3 **NEW**

Blade Length	3.54" / 89.9mm
Overall Length	8.12" / 206.2mm
Blade Thickness	0.118" / 3.0mm
Weight	3.63oz / 103g
Blade Steel	S35VN
Handle Material	Titanium + Timascus Inlay



T1019C1 **NEW**

Blade Length	3.54" / 89.9mm
Overall Length	8.12" / 206.2mm
Blade Thickness	0.118" / 3.0mm
Weight	2.78oz / 79g
Blade Steel	154CM
Handle Material	Black G10



T1019C2 **NEW**

Blade Length	3.54" / 89.9mm
Overall Length	8.12" / 206.2mm
Blade Thickness	0.118" / 3.0mm
Weight	2.78oz / 79g
Blade Steel	154CM
Handle Material	Shred Carbon Fiber



Max Tkachuk

Designer

Max Tkachuk is a Ukrainian graphic and industrial designer. From childhood he was fascinated with knives. He uses his experience and skills to create functional and aesthetic knives. In his work he is guided by the principle "less is more".



Prickle 1012

PRICKLE EDC knife fits both suit and jeans at the same time. Simple shapes combine practicality and emphasize the texture of modern materials. This is a compact and functional knife that will be an assistant in everyday tasks.

PRICKLE 1012

T1012A1 **NEW**

Blade Length	3.53"/89.85mm
Overall Length	8.06"/204.76mm
Blade Thickness	0.118" / 3.0mm
Weight	3.34oz/94.8g
Blade Steel	Black Ti-coated 154CM
Handle Material	Bronze Anodized Stainless Steel+Black G10



T1012A4 **NEW**

Blade Length	3.53"/89.85mm
Overall Length	8.06"/204.76mm
Blade Thickness	0.118" / 3.0mm
Weight	3.34oz/94.8g
Blade Steel	154CM Drop Point Blade
Handle Material	Black Anodized Stainless Steel+Blue G10



T1012A5 **NEW**

Blade Length	3.53"/89.85mm
Overall Length	8.06"/204.76mm
Blade Thickness	0.118" / 3.0mm
Weight	3.34oz/94.8g
Blade Steel	Black Ti-coated 154CM
Handle Material	Stainless Steel+Brown Micarta



T1012T2 **NEW**

Blade Length	3.53"/89.85mm
Overall Length	8.06"/204.76mm
Blade Thickness	0.118" / 3.0mm
Weight	3.34oz/94.8g
Blade Steel	Black Ti-coated 154CM
Handle Material	Green G10



PRICKLE 1012

K1012T3 **NEW**

Blade Length	3.53" / 89.85mm
Overall Length	8.06" / 204.76mm
Blade Thickness	0.118" / 3.0mm
Weight	3.34oz / 94.8g
Blade Steel	S35VN Tanto Blade
Handle Material	Black Ti-coated 154CM



K1012A3 **NEW**

Blade Length	3.53" / 89.85mm
Overall Length	8.06" / 204.76mm
Blade Thickness	0.118" / 3.0mm
Weight	3.34oz / 94.8g
Blade Steel	S35VN Drop Point Blade
Handle Material	Black Ti-coated 154CM



Matt Degnan

Designer

Being born and raised in Southern California, Matt split his summers between the beaches of Orange County and mountains of Yosemite. It was there (in Yosemite) during a fishing trip with his father, he was given his first pocket knife. Many years later, he discovered the custom knife world and began designing and building handmade knives in his garage.



Stellar 2021

Matt designed the Stellar as a take on the box cutter. He made it into a frame lock flipper with a minimalist flipper tab.

STELLER 2021

K2021A1 **NEW**

Blade Length	2.92"/74.2mm	Overall Length	4.62"/117.4mm	Blade Thickness	0.12" / 3.0mm
Weight	3.99oz/113g	Blade Steel	CPM-S35VN	Handle Material	Titanium



K2021A2 **NEW**

Blade Length	2.92"/74.2mm	Overall Length	4.62"/117.4mm	Blade Thickness	0.12" / 3.0mm
Weight	3.99oz/113g	Blade Steel	CPM-S35VN	Handle Material	Black Ti-coated Titanium



Dirk Pinkerton

Designer

Honed by 18 years in the Security Industry, Dirk is famed for his effective, no non-sense, and explicitly purpose-driven models. This dynamic approach to knife designs fuels the growing demand for Dirk's creations. Dirk primarily focus his work on elegant fixed blade and neck knives. His design philosophy is simple: Big enough to get the job done, but in the smallest package. Comfortable but versatile grip. Able to handle whatever task you would expect a knife to handle.



Mujir 1014

The Mujir is a bit of a fun blend of influences from persian style blade with a more western style handle. It is a small enough folder to carry easily and not appear to aggressive. The name Mujir roughly means helper or assistant.

MUJIR 1014

K1014A2 **NEW**

Blade Length	3.3"/83.9mm
Overall Length	7.52"/191.07mm
Blade Thickness	0.14" / 3.5mm
Weight	3.27oz/92.6g
Blade Steel	CPM-S35VN
Handle Material	Orange Peel Titanium Handle with Rose Pattern Carbon Fiber Inlay



Carbon Fiber Bolster

K1014A3 **NEW**

Blade Length	3.3"/83.9mm
Overall Length	7.52"/191.07mm
Blade Thickness	0.14" / 3.5mm
Weight	3.27oz/92.6g
Blade Steel	CPM-S35VN
Handle Material	Black Coating Titanium Handle with Rose Pattern Carbon Fiber Inlay



Carbon Fiber Bolster

K1014A4 **NEW**

Blade Length	3.3"/83.9mm
Overall Length	7.52"/191.07mm
Blade Thickness	0.14" / 3.5mm
Weight	3.27oz/92.6g
Blade Steel	CPM-S20CV
Handle Material	Black Coating Titanium Handle with Timascus Inlay



Timascus Bolster

Dirk Pinkerton

Designer

Honed by 18 years in the Security Industry, Dirk is famed for his effective, no non-sense, and explicitly purpose-driven models. This dynamic approach to knife designs fuels the growing demand for Dirk's creations. Dirk primarily focus his work on elegant fixed blade and neck knives.

His design philosophy is simple: Big enough to get the job done, but in the smallest package.

Comfortable but versatile grip. Able to handle whatever task you would expect a knife to handle.



Main Street 1015

The Main Street, designed by Dirk Pinkerton, is a pocket knife that is eligible for utility tasks. The blade has a wharncliffe shape that pierces and slices with ease. It is a budget-friendly model with G10 micarta and carbon fiber handle and a 154CM blade.

MAIN STREET 1015

T1015A1 **NEW**

Blade Length	3.36"/85.25mm
Overall Length	7.92"/201.27mm
Blade Thickness	0.125"/3.2mm
Weight	4.09oz/116g
Blade Steel	Black Coating 154CM
Handle Material	Black G10



T1015A2 **NEW**

Blade Length	3.36"/85.25mm
Overall Length	7.92"/201.27mm
Blade Thickness	0.125"/3.2mm
Weight	4.09oz/116g
Blade Steel	Black Coating 154CM
Handle Material	Green Micarta



T1015A3 **NEW**

Blade Length	3.36"/85.25mm
Overall Length	7.92"/201.27mm
Blade Thickness	0.125"/3.2mm
Weight	4.09oz/116g
Blade Steel	154CM
Handle Material	Carbon Fiber



T1015A4 **NEW**

Blade Length	3.36"/85.25mm
Overall Length	7.92"/201.27mm
Blade Thickness	0.125"/3.2mm
Weight	4.09oz/116g
Blade Steel	Black Coating 154CM
Handle Material	Brown Micarta



MAIN STREET 1015

T1015A6 **NEW**

Blade Length	3.36"/85.25mm
Overall Length	7.92"/201.27mm
Blade Thickness	0.125"/3.2mm
Weight	4.09oz/116g
Blade Steel	Black Ti-coated 154CM
Handle Material	Purple G10



Dirk Pinkerton

Designer

Honed by 18 years in the Security Industry, Dirk is famed for his effective, no non-sense, and explicitly purpose-driven models.

This dynamic approach to knife designs fuels the growing demand for Dirk's creations. Dirk primarily focus his work on elegant fixed blade and neck knives.

His design philosophy is simple: Big enough to get the job done, but in the smallest package.

Comfortable but versatile grip. Able to handle whatever task you would expect a knife to handle.



Little Main Street 2015

The mini main street is knife designed to go most anywhere and still be an effective tool. The wharncliffe blade is the most versatile blade shape. Especially for a small knife.

LITTLE MAIN STREET 2015

T2015A1 **NEW**

Blade Length	2.26"/57.4mm
Overall Length	5.43"/138mm
Blade Thickness	0.118" / 3.0m
Weight	1.66oz/47g
Blade Steel	Black Ti-coated 154CM
Handle Material	Black G10 and Stainless Steel



T2015A3 **NEW**

Blade Length	2.26"/57.4mm
Overall Length	5.43"/138mm
Blade Thickness	0.118" / 3.0m
Weight	1.66oz/47g
Blade Steel	154CM
Handle Material	Carbon Fiber



T2015A4 **NEW**

Blade Length	2.26"/57.4mm
Overall Length	5.43"/138mm
Blade Thickness	0.118" / 3.0m
Weight	1.66oz/47g
Blade Steel	154CM
Handle Material	Blue G10



T2015A5 **NEW**

Blade Length	2.26"/57.4mm
Overall Length	5.43"/138mm
Blade Thickness	0.118" / 3.0m
Weight	1.66oz/47g
Blade Steel	154CM
Handle Material	Brown Micarta



LITTLE MAIN STREET 2015

T2015A6 **NEW**

Blade Length	2.26"/57.4mm
Overall Length	5.43"/138mm
Blade Thickness	0.118" / 3.0mm
Weight	1.66oz/47g
Blade Steel	Black Ti-coated 154CM
Handle Material	Purple G10



Mikkel Willumsen

Designer

Mikkel Willumsen has gained notoriety worldwide for his innovative and gritty Urban Tactical designs. Based in Copenhagen, Denmark, Mikkel has been designing and producing custom made knives for over 20 years, specializing in high quality folders and fixed blades.

By bringing his talents and experience to Kansept, you can expect the functionally modern aesthetics that define his work combined with Kansept's unwavering dedication to quality.



Hellx 1008

The Hellx is a Tactical knife with attunement and elegance. It is a full-size tactical/EDC folder. You can hold on to the back of the handle for added leverage in use, or choke up into the choil for precise cuts. The blade has a very gentle tanto profile, making the knife great for utility tasks, but it's not so drastic that it loses belly. It's a hard user with an ergonomic grip and size that makes it your perfect Tactical choice.

HELLX 1008

K1008A1

Blade Length	3.6"/92mm
Overall Length	8.9"/225.9mm
Blade Thickness	0.14" / 3.5mm
Weight	5.9oz/168g
Blade Steel	CPM-S35VN
Handle Material	Black Ti-coated Titanium



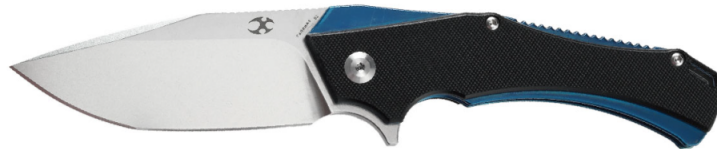
K1008A2

Blade Length	3.6"/92mm
Overall Length	8.9"/225.9mm
Blade Thickness	0.14" / 3.5mm
Weight	5.9oz/168g
Blade Steel	Gray Ti-coated S35VN
Handle Material	Black Ti-coated Titanium



T1008A1

Blade Length	3.6"/92mm
Overall Length	8.9"/225.9mm
Blade Thickness	0.14" / 3.5mm
Weight	5.9oz/168g
Blade Steel	Stonewashed D2
Handle Material	Black G10+Anodized Blue Stainless Steel



T1008A2

Blade Length	3.6"/92mm
Overall Length	8.9"/225.9mm
Blade Thickness	0.14" / 3.5mm
Weight	5.9oz/168g
Blade Steel	Gray Ti-Coated D2
Handle Material	OD Green G10+Anodized Bronze Stainless Steel



HELLX 1008

T008A3

Blade Length	3.6"/92mm
Overall Length	8.9"/225.9mm
Blade Thickness	0.14" / 3.5mm
Weight	5.9oz/168g
Blade Steel	Stonewashed D2
Handle Material	Blue G10+Anodized Gray Stainless Steel



Jelly Jerry

Designer

knives are tools that have been use by human civilization for thousands of years to doalmost every task we needed for survival, we have evolved along with the knives and right now we are at an very advanced and exciting age where knives are no longer just useful tools but can also be fun to use with the advancements we've made to them along the way.

Jerry, mostly being known under the designer alias

Jelly Jerry. From the beginning of his designing career

He has set his goal as a knife designer to bring more

unique designs that are practical but fun to look at

to use and to be a reliable companion to the user,

and He also wants the person owning his knives to

be able to enjoy them without having to worry

about the quality of the knife, and that is why

he decided to partner with Kansept knife

to bring you exactly what he envisions

on how knives should be, quality, fun

and reliable.



Delta 1011

The Delta is Jerry's first collaboration with Kansept knives, the design was base on his inspiration from sci-fi movies aesthetic, he wanted to design something that look like it belong to a distance future, where humans is a multi-planetary species, what would their simple tools such as a knife look like ? To Jerry, the Delta is exactly what he think a knife used by an advance multi-planetary species would look like and he has partnered with Kansept to bring that vision to real life.

DELTA 1011

K1011A1

Blade Length	3.54"/90mm
Overall Length	8.45/214.6mm
Blade Thickness	0.157" / 4.0mm
Weight	5.54oz/157g
Blade Steel	CPM-S35VN
Handle Material	6AL4V Titanium



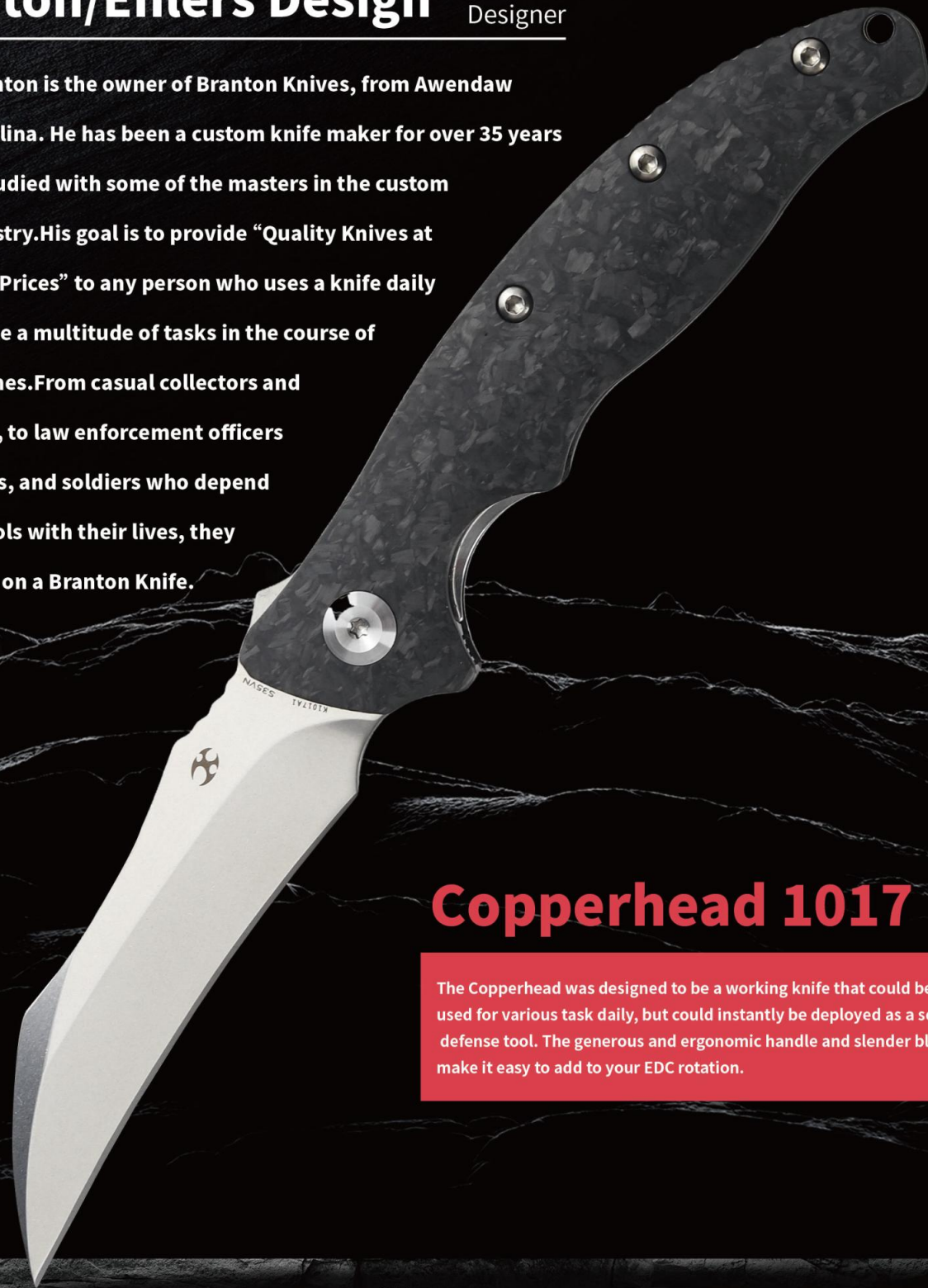
K1011A2

Blade Length	3.54"/90mm
Overall Length	8.45/214.6mm
Blade Thickness	0.157" / 4.0mm
Weight	5.33oz/151g
Blade Steel	CPM-S35VN
Handle Material	6AL4V Titanium+Blue and Black Carbon Fiber Inlays



Branton/Ehlers Design Designer

Bobby Branton is the owner of Branton Knives, from Awendaw South Carolina. He has been a custom knife maker for over 35 years and has studied with some of the masters in the custom knife industry. His goal is to provide "Quality Knives at Affordable Prices" to any person who uses a knife daily to complete a multitude of tasks in the course of their routines. From casual collectors and sportsmen, to law enforcement officers fire fighters, and soldiers who depend on their tools with their lives, they all can rely on a Branton Knife.



Copperhead 1017

The Copperhead was designed to be a working knife that could be used for various task daily, but could instantly be deployed as a self defense tool. The generous and ergonomic handle and slender blade make it easy to add to your EDC rotation.

COPPERHEAD 1017

K1017A1

Blade Length	3.54"/90mm
Overall Length	8.36"/212.4mm
Blade Thickness	0.14" / 3.5mm
Weight	3.7oz/105g
Blade Steel	CPM-S35VN
Handle Material	Shred Carbon Fiber



K1017A3

Blade Length	3.54"/90mm
Overall Length	8.36"/212.4mm
Blade Thickness	0.14" / 3.5mm
Weight	3.7oz/105g
Blade Steel	Black Ti-coated S35VN
Handle Material	Black G10



K1017A4

Blade Length	3.54"/90mm
Overall Length	8.36"/212.4mm
Blade Thickness	0.14" / 3.5mm
Weight	6.28oz/178g
Blade Steel	CPM-S35VN
Handle Material	Copper+Stainless Steel



T1017A2

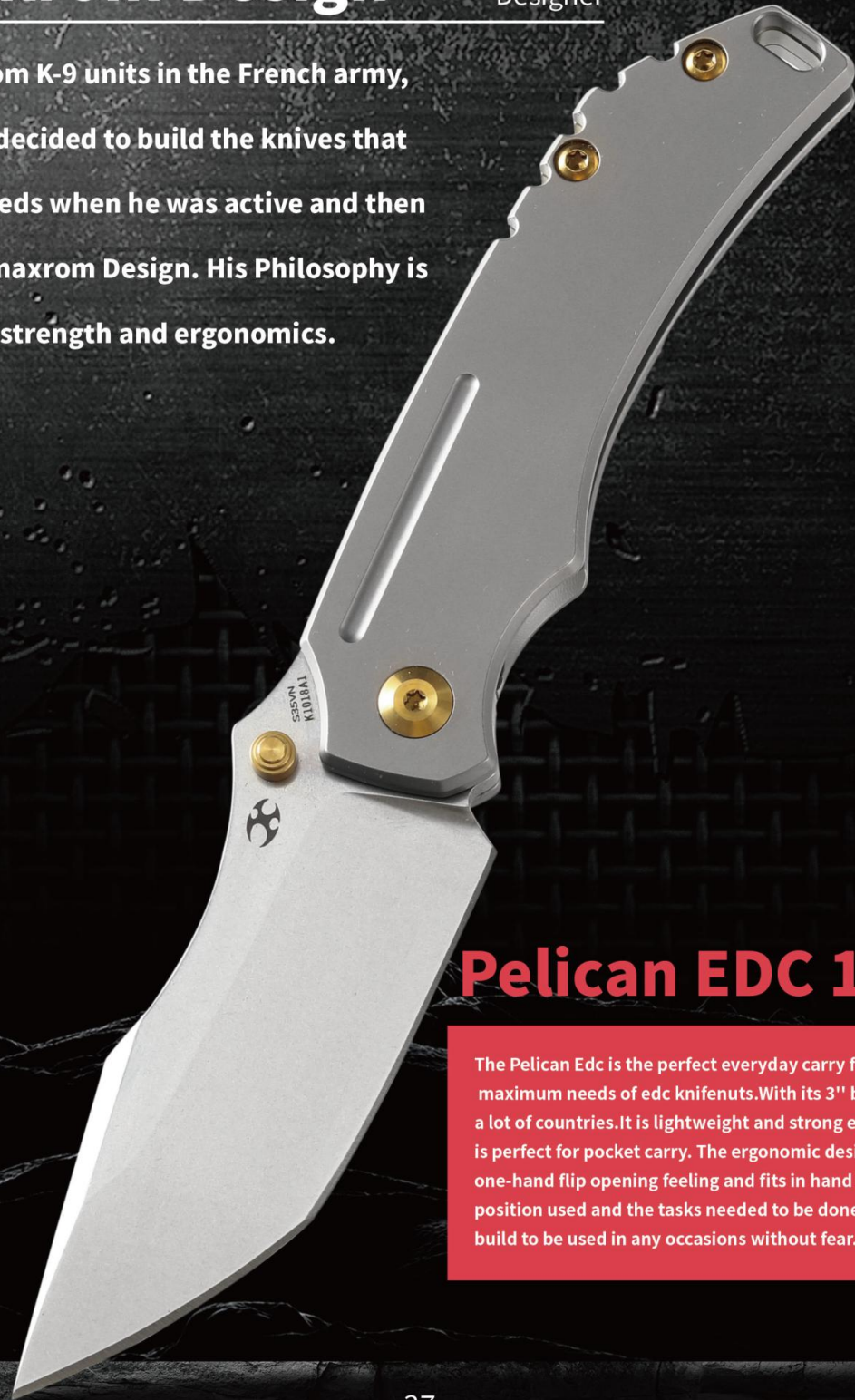
Blade Length	3.54"/90mm
Overall Length	8.36"/212.4mm
Blade Thickness	0.14" / 3.5mm
Weight	3.7oz/105g
Blade Steel	Black Ti-coated 154CM
Handle Material	Orange G10



Kmaxrom Design

Designer

Retired from K-9 units in the French army, Jonathan decided to build the knives that met his needs when he was active and then created Kmaxrom Design. His Philosophy is durability, strength and ergonomics.



Pelican EDC 1018

The Pelican EDC is the perfect everyday carry folders that satisfy the maximum needs of edc knifemakers. With its 3" blade, it can be legit in a lot of countries. It is lightweight and strong enough even if the size is perfect for pocket carry. The ergonomic design offers a perfect one-hand flip opening feeling and fits in hand whatever the hand position used and the tasks needed to be done. The Pelican EDC is built to be used in any occasions without fear.

PELICAN EDC 1018

K1018A1

Blade Length	3.0"/76.3mm
Overall Length	7.0"/177.8mm
Blade Thickness	0.14" / 3.5mm
Weight	3.43oz/97.24g
Blade Steel	CPM-S35VN
Handle Material	6AL4V Titanium



K1018A2

Blade Length	3.0"/76.3mm
Overall Length	7.0"/177.8mm
Blade Thickness	0.14" / 3.5mm
Weight	3.43oz/97.24g
Blade Steel	Black Stonewashed S35VN
Handle Material	Black Ti-coated Titanium



K1018A3

Blade Length	3.0"/76.3mm
Overall Length	7.0"/177.8mm
Blade Thickness	0.14" / 3.5mm
Weight	3.43oz/97.24g
Blade Steel	CPM-S35VN
Handle Material	6AL4V Titanium



K1018A4

Blade Length	3.0"/76.3mm
Overall Length	7.0"/177.8mm
Blade Thickness	0.14" / 3.5mm
Weight	3.43oz/97.24g
Blade Steel	Black Stonewashed S35VN
Handle Material	Black Ti-coated Titanium



Marshall Noble

Designer

Marshall has been making knives since 2002, It was not until 2015 that he started making knives full time focusing on folding knives centering on the fit and finish and premium materials.

He has always felt that form follows function, yet views knife making as an art form, they become more than just a practical knife.



Goblin 2016

With over built knives being so popular he wanted to make the biggest little knife he could. Little knives often do not handle large tasks well, so he made a knife with a broad blade for these large tasks, while staying compact. The Goblin was inspired by the 1984 US Airforce XF-85 Goblin experimental fighter jet that was compact, yet packed a punch. There are three ways to opening the Goblin, from the front flipper tab, to the finger flick or the traditional thump hole opening. Added to the design is a stylish pocket clip to finish it off.

GOBLIN 2016

K2016A1

Blade Length	2.18" / 55.6mm
Overall Length	5.63" / 143mm
Blade Thickness	0.118" / 3.0m
Weight	2.4oz/68g
Blade Steel	CPM-S35VN
Handle Material	Dark Gray Anodized Titanium



K2016A2

Blade Length	2.18" / 55.6mm
Overall Length	5.63" / 143mm
Blade Thickness	0.118" / 3.0m
Weight	2.4oz/68g
Blade Steel	Black Stonewashed S35VN
Handle Material	Black Ti-coated Titanium



K2016A3

Blade Length	2.18" / 55.6mm
Overall Length	5.63" / 143mm
Blade Thickness	0.118" / 3.0m
Weight	2.4oz/68g
Blade Steel	CPM-S35VN
Handle Material	Dark bronze Anodized Titanium



Kim Ning

Designer

Kim Ning has over 20 years in the knife industry under his belt. He is a veritable veteran when it comes to bringing his designs to life. Whether creating intricate folders or rugged fixed blades, Kim's attention shows thoroughly in each small detail of his designs.



Spirit 1002

The K1002 Spirit is a utilitarian EDC flipper knife designed by Kim Ning. A stainless blade made from CPM-S35VN steel comes in a streamlined curved sheepfoot style with a satin finish. It is equipped with a titanium pocket clip and the smooth bearing pivots. The Kansept Spirit provides a comfortable, ergonomic design that is the perfect size for EDC or tactical use.

SPIRIT 1002

K1002A1

Blade Length	3.50" / 88.9mm
Overall Length	8.23" / 209mm
Blade Thickness	0.157" / 4.0mm
Weight	4.9oz/139.1g
Blade Steel	CPM-S35VN with Thumb slot
Handle Material	6AL4V Titanium



K1002A2

Blade Length	3.50" / 88.9mm
Overall Length	8.23" / 209mm
Blade Thickness	0.157" / 4.0mm
Weight	4.9oz/139.1g
Blade Steel	Black Stonewashed S35VN
Handle Material	6AL4V Titanium



K1002A5

Blade Length	3.50" / 88.9mm
Overall Length	8.23" / 209mm
Blade Thickness	0.157" / 4.0mm
Weight	4.9oz/139.1g
Blade Steel	CPM-S35VN
Handle Material	6AL4V Titanium



K1002A6

Blade Length	3.50" / 88.9mm
Overall Length	8.23" / 209mm
Blade Thickness	0.157" / 4.0mm
Weight	4.9oz/139.1g
Blade Steel	Black Stonewashed S35VN
Handle Material	Teal Anodized 6AL4V Titanium



SPIRIT 1002

K1002A7

Blade Length	3.50" / 88.9mm
Overall Length	8.23" / 209mm
Blade Thickness	0.157" / 4.0mm
Weight	4.9oz/139.1g
Blade Steel	CPM-S35VN
Handle Material	6AL4V Titanium+Carbon Fiber



K1002A8

Blade Length	3.50" / 88.9mm
Overall Length	8.23" / 209mm
Blade Thickness	0.157" / 4.0mm
Weight	4.9oz/139.1g
Blade Steel	CPM-S35VN
Handle Material	Carbon Fiber



K1002 Woodgrain (Limited Edition)

Blade Length	3.50" / 88.9mm
Overall Length	8.23" / 209mm
Blade Thickness	0.157" / 4.0mm
Weight	4.9oz/139.1g
Blade Steel	CPM-S35VN Blade + Flipper
Handle Material	6AL4V Titanium



Kim Ning

Designer

Kim Ning has over 20 years in the knife industry under his belt. He is a veritable veteran when it comes to bringing his designs to life. Whether creating intricate folders or rugged fixed blades, Kim's attention shows thoroughly in each small detail of his designs.



Sprite 1003

The Sprite is a smooth flipper knife with an ergonomic build titanium handle for everyday carry. This model sports a clip point blade made from CPM-S35VN stainless steel in a satin finish. Its titanium frame lock handle is outfitted with a marbled carbon fiber or OD green canvas micarta inlay. A secure titanium pocket clip and ultra thin profile allows comfortable daily carry.

SPRITE 1003

K1003A1

Blade Length	3.58" / 91mm
Overall Length	8.13" / 206.6mm
Blade Thickness	0.157" / 4.0mm
Weight	4.06oz/115g
Blade Steel	CPM-S35VN
Handle Material	6AL4V Titanium+carbon fiber



K1003A2

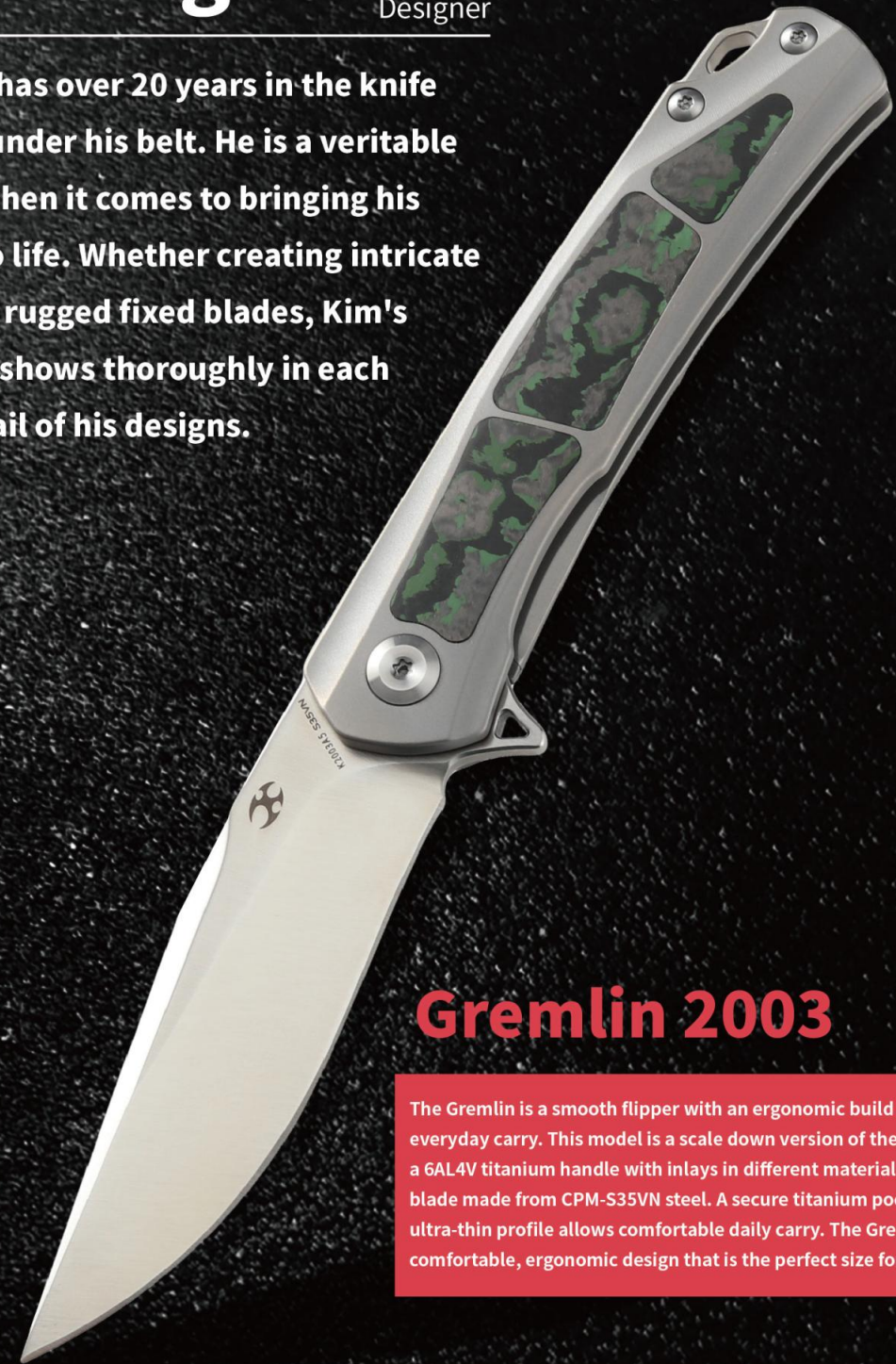
Blade Length	3.58" / 91mm
Overall Length	8.13" / 206.6mm
Blade Thickness	0.157" / 4.0mm
Weight	4.06oz/115g
Blade Steel	CPM-S35VN
Handle Material	6AL4V Titanium+Green canvas micarta



Kim Ning

Designer

Kim Ning has over 20 years in the knife industry under his belt. He is a veritable veteran when it comes to bringing his designs to life. Whether creating intricate folders or rugged fixed blades, Kim's attention shows thoroughly in each small detail of his designs.



Gremlin 2003

The Gremlin is a smooth flipper with an ergonomic build handle for everyday carry. This model is a scale down version of the Sprite. It sports a 6AL4V titanium handle with inlays in different materials and a clip point blade made from CPM-S35VN steel. A secure titanium pocket clip and ultra-thin profile allows comfortable daily carry. The Gremlin provides a comfortable, ergonomic design that is the perfect size for EDC use.

GREMLIN 2003

K2003A1

Blade Length	2.91" / 74mm
Overall Length	6.85" / 174.2mm
Blade Thickness	0.11" / 3.0mm
Weight	2.65oz/75g
Blade Steel	CPM-S35VN
Handle Material	6AL4V Titanium + Green Micarta



K2003A2

Blade Length	2.91" / 74mm
Overall Length	6.85" / 174.2mm
Blade Thickness	0.11" / 3.0mm
Weight	2.65oz/75g
Blade Steel	CPM-S35VN
Handle Material	6AL4V Titanium+Carbon fiber



K2003A3

Blade Length	2.91" / 74mm
Overall Length	6.85" / 174.2mm
Blade Thickness	0.11" / 3.0mm
Weight	2.65oz/75g
Blade Steel	CPM-S35VN
Handle Material	6AL4V Titanium+Carbon fiber



K2003A4

Blade Length	2.91" / 74mm
Overall Length	8.08" / 205.3mm
Blade Thickness	0.11" / 3.0mm
Weight	2.65oz/75g
Blade Steel	Damsteel
Handle Material	6AL4V Titanium+Red marbled carbon fiber



GREMLIN 2003

K2003A5

Blade Length	2.91" / 74mm
Overall Length	8.08" / 205.3mm
Blade Thickness	0.11" / 3.0mm
Weight	2.65oz/75g
Blade Steel	CPM-S35VN
Handle Material	6AL4V Titanium+jungle wear carbon fiber



Kim Ning

Designer

Kim Ning has over 20 years in the knife industry under his belt. He is a veritable veteran when it comes to bringing his designs to life. Whether creating intricate folders or rugged fixed blades, Kim's attention shows thoroughly in each small detail of his designs.



Agent 1004

The Agent is outfitted with a blade made from CPM-S35VN and a 6AL4V titanium handle. It offers both clip point and tanto blade that meets with different usage demands. And the slight curve in the handle provides a comfortable grip, while chamfered edges ensures the knife is free of any hot spots.

AGENT 1004

K1004A1

Blade Length	3.58" / 91mm
Overall Length	8.23" / 209mm
Blade Thickness	0.157" / 4.0mm
Weight	4.34oz/123g
Blade Steel	CPM-S35VN
Handle Material	6AL4V Titanium



Two-tone Hollow-out Titanium Handle

K1004A2

Blade Length	3.58" / 91mm
Overall Length	8.23" / 209mm
Blade Thickness	0.157" / 4.0mm
Weight	4.34oz/123g
Blade Steel	CPM-S35VN
Handle Material	6AL4V Titanium



K1004A3

Blade Length	3.58" / 91mm
Overall Length	8.23" / 209mm
Blade Thickness	0.157" / 4.0mm
Weight	4.34oz/123g
Blade Steel	CPM-S35VN+Black Coating
Handle Material	6AL4V Titanium



35

K1004T1

Blade Length	3.58" / 91mm
Overall Length	8.23" / 209mm
Blade Thickness	0.157" / 4.0mm
Weight	4.34oz/123g
Blade Steel	CPM-S35VN
Handle Material	6AL4V Titanium



Two-tone Hollow-out Titanium Handle

AGENT 1004

K1004T2

Blade Length	3.58" / 91mm
Overall Length	8.23" / 209mm
Blade Thickness	0.157" / 4.0mm
Weight	4.34oz/123g
Blade Steel	CPM-S35VN
Handle Material	6AL4V Titanium



K1004T3

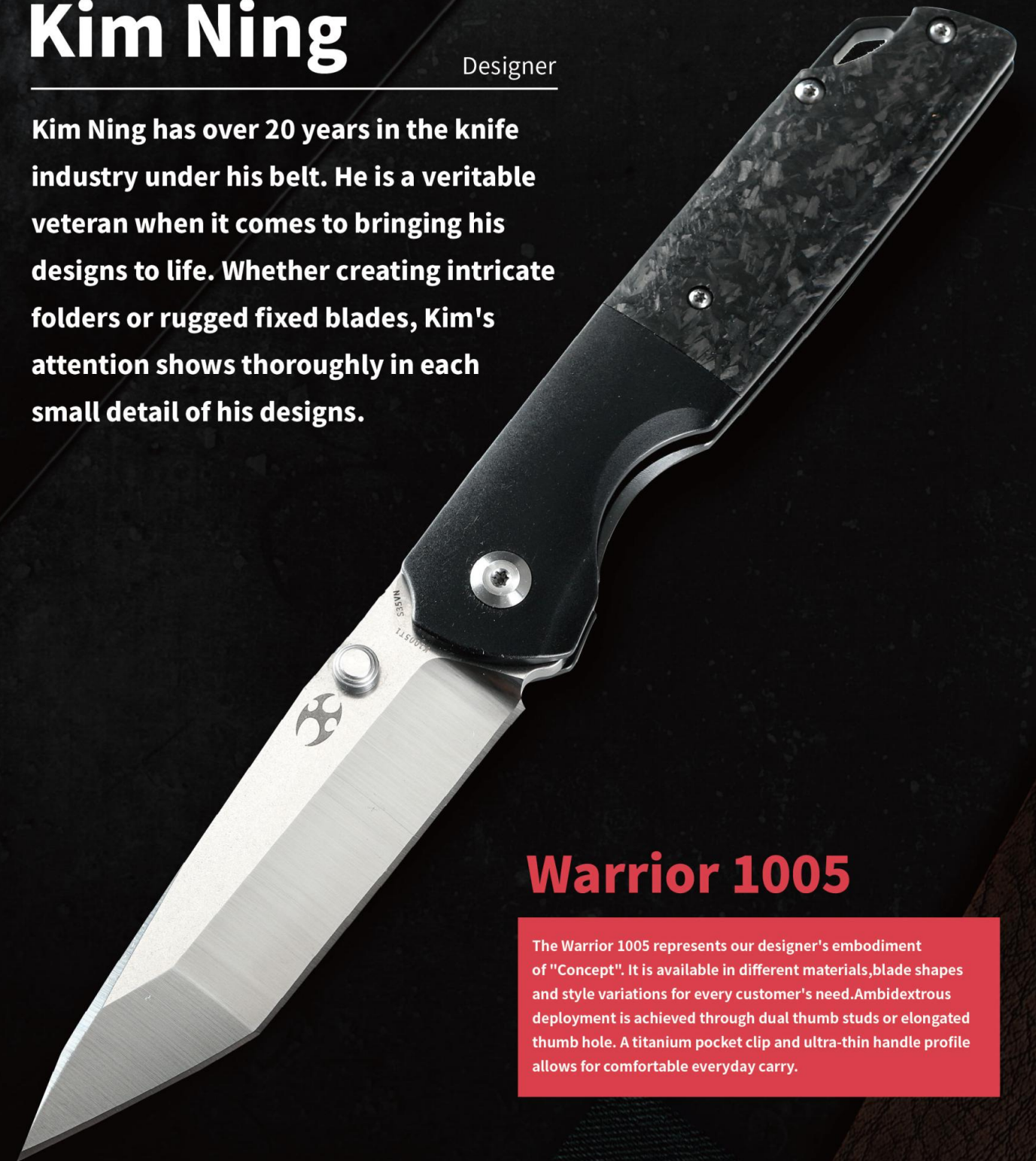
Blade Length	3.58" / 91mm
Overall Length	8.23" / 209mm
Blade Thickness	0.157" / 4.0mm
Weight	4.34oz/123g
Blade Steel	CPM-S35VN
Handle Material	CPM-S35VN+Black Coating



Kim Ning

Designer

Kim Ning has over 20 years in the knife industry under his belt. He is a veritable veteran when it comes to bringing his designs to life. Whether creating intricate folders or rugged fixed blades, Kim's attention shows thoroughly in each small detail of his designs.



Warrior 1005

The Warrior 1005 represents our designer's embodiment of "Concept". It is available in different materials, blade shapes and style variations for every customer's need. Ambidextrous deployment is achieved through dual thumb studs or elongated thumb hole. A titanium pocket clip and ultra-thin handle profile allows for comfortable everyday carry.

WARRIOR 1005

K1005T1

Blade Length	3.46" / 88mm
Overall Length	8.02" / 203.6mm
Blade Thickness	0.157" / 4.0mm
Weight	3.81oz/108g
Blade Steel	CPM-S35VN
Handle Material	6AL4V Titanium+carbon fiber+Tanto Blade



Two-tone Satin/Stonewashed S35VN Blade

K1005T2

Blade Length	3.46" / 88mm
Overall Length	8.02" / 203.6mm
Blade Thickness	0.157" / 4.0mm
Weight	3.81oz/108g
Blade Steel	CPM-S35VN
Handle Material	6AL4V Titanium+carbon fiber+Tanto Blade



Carbon Fiber Inlays,Orange Peel Finish Titanium Handle

K1005T5

Blade Length	3.46" / 88mm
Overall Length	8.02" / 203.6mm
Blade Thickness	0.157" / 4.0mm
Weight	3.81oz/108g
Blade Steel	CPM-S35VN
Handle Material	6AL4V Titanium+green micarta



K1005T6

Blade Length	3.46" / 88mm
Overall Length	8.02" / 203.6mm
Blade Thickness	0.157" / 4.0mm
Weight	3.67oz/104.5g
Blade Steel	CPM-S35VN
Handle Material	6AL4V Titanium+carbon fiber+Drop Point Blade



WARRIOR 1005

K1005T6L (Left-handed)

Blade Length	3.46" / 88mm
Overall Length	8.02" / 203.6mm
Blade Thickness	0.157" / 4.0mm
Weight	3.67oz/104.5g
Blade Steel	CPM-S35VN
Handle Material	6AL4V Titanium+carbon fiber+Tanto Blade



K1005T7

Blade Length	3.46" / 88mm
Overall Length	8.02" / 203.6mm
Blade Thickness	0.157" / 4.0mm
Weight	3.67oz/104.5g
Blade Steel	CPM-S35VN
Handle Material	6AL4V Titanium+Green micarta+Drop Point Blade



K1005T7L (Left-handed)

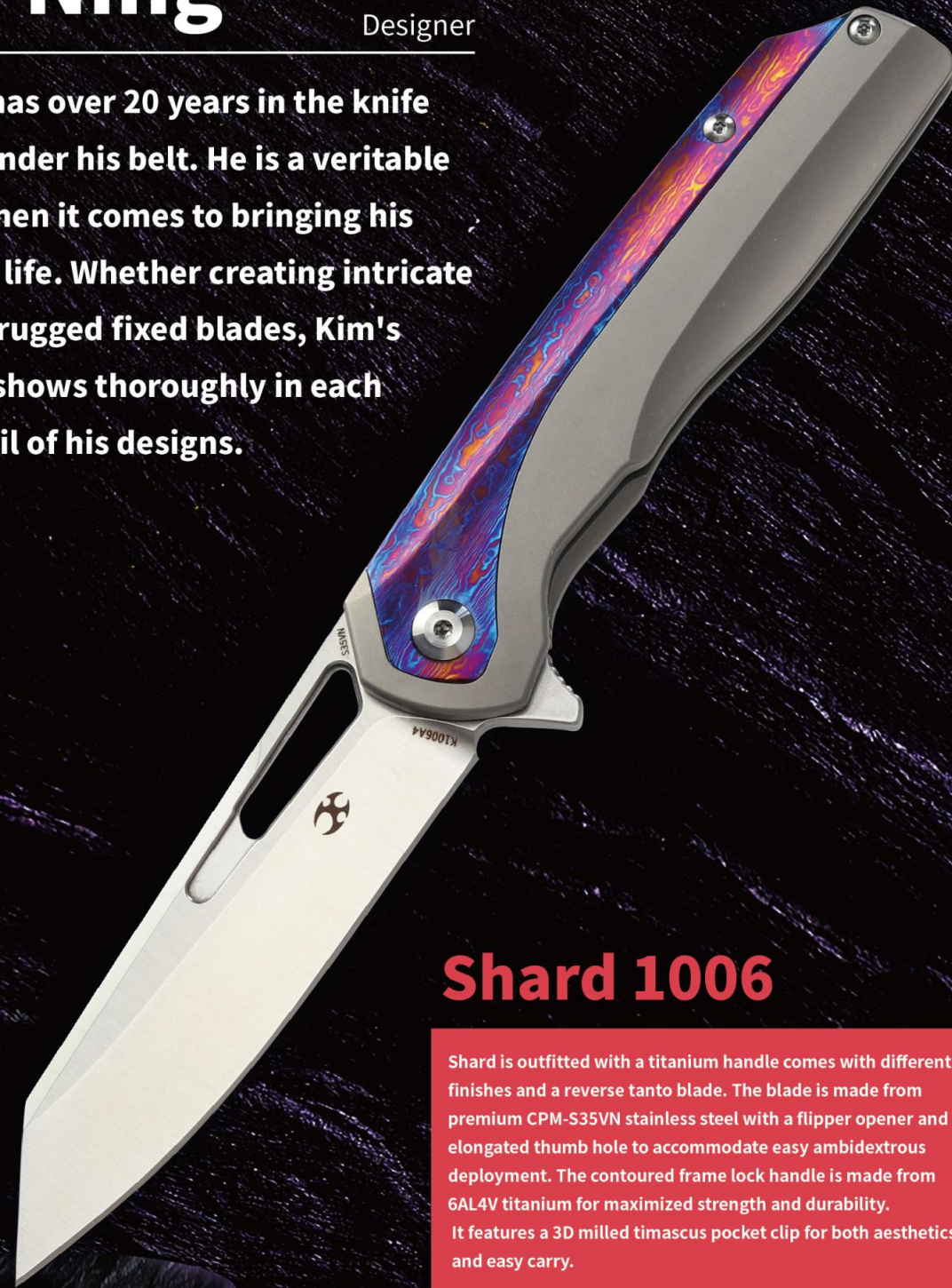
Blade Length	3.46" / 88mm
Overall Length	8.02" / 203.6mm
Blade Thickness	0.157" / 4.0mm
Weight	3.67oz/104.5g
Blade Steel	CPM-S35VN
Handle Material	6AL4V Titanium+green micarta



Kim Ning

Designer

Kim Ning has over 20 years in the knife industry under his belt. He is a veritable veteran when it comes to bringing his designs to life. Whether creating intricate folders or rugged fixed blades, Kim's attention shows thoroughly in each small detail of his designs.



Shard 1006

Shard is outfitted with a titanium handle comes with different finishes and a reverse tanto blade. The blade is made from premium CPM-S35VN stainless steel with a flipper opener and elongated thumb hole to accommodate easy ambidextrous deployment. The contoured frame lock handle is made from 6AL4V titanium for maximized strength and durability. It features a 3D milled timascus pocket clip for both aesthetics and easy carry.

SHARD 1006

K1006 Vertical Woodgrain (Limited Edition) **NEW**

Blade Length	3.46" / 88mm
Overall Length	7.96" / 202.1mm
Blade Thickness	0.14" / 3.5mm
Weight	3.98oz/112.84g
Blade Steel	CPM-S35VN
Handle Material	6AL4V Titanium



Vertical Woodgrain Titanium Handle

K1006 Circle Woodgrain (Limited Edition) **NEW**

Blade Length	3.46" / 88mm
Overall Length	7.96" / 202.1mm
Blade Thickness	0.14" / 3.5mm
Weight	3.98oz/112.84g
Blade Steel	CPM-S35VN
Handle Material	6AL4V Titanium



Circle Woodgrain Titanium Handle

K1006A1

Blade Length	3.46" / 88mm
Overall Length	7.96" / 202.1mm
Blade Thickness	0.14" / 3.5mm
Weight	3.98oz/112.84g
Blade Steel	CPM-S35VN
Handle Material	6AL4V Titanium



K1006A2

Blade Length	3.46" / 88mm
Overall Length	7.96" / 202.1mm
Blade Thickness	0.14" / 3.5mm
Weight	4.22oz/119.5g
Blade Steel	CPM-S35VN
Handle Material	6AL4V Titanium



SHARD 1006

K1006A3

Blade Length	3.46" / 88mm
Overall Length	7.96" / 202.1mm
Blade Thickness	0.14" / 3.5mm
Weight	4.22oz/119.5g
Blade Steel	CPM-S35VN
Handle Material	6AL4V Titanium+carbon fiber+timascus clip



K1006A4

Blade Length	3.46" / 88mm
Overall Length	7.96" / 202.1mm
Blade Thickness	0.14" / 3.5mm
Weight	4.22oz/119.5g
Blade Steel	CPM-S35VN
Handle Material	6AL4V Titanium+Timascus+timascus clip



K1006A5

Blade Length	3.46" / 88mm
Overall Length	7.96" / 202.1mm
Blade Thickness	0.14" / 3.5mm
Weight	4.22oz/119.5g
Blade Steel	CPM-S35VN
Handle Material	6AL4V Titanium+carbon fiber



K1006A6

Blade Length	3.46" / 88mm
Overall Length	7.96" / 202.1mm
Blade Thickness	0.14" / 3.5mm
Weight	4.22oz/119.5g
Blade Steel	CPM-S35VN
Handle Material	Green Anodized Titanium + Copper



SHARD 1006

K1006A7

Blade Length	3.46" / 88mm
Overall Length	7.96" / 202.1mm
Blade Thickness	0.14" / 3.5mm
Weight	4.22oz/119.5g
Blade Steel	CPM-S35VN
Handle Material	black anodized 6AL4V Titanium+copper



K1006A8

Blade Length	3.46" / 88mm
Overall Length	7.96" / 202.1mm
Blade Thickness	0.14" / 3.5mm
Weight	3.98oz/112.84g
Blade Steel	CPM-S35VN
Handle Material	Blue Anodized Titanium Handle



Kim Ning

Designer

Kim Ning has over 20 years in the knife industry under his belt. He is a veritable veteran when it comes to bringing his designs to life. Whether creating intricate folders or rugged fixed blades, Kim's attention shows thoroughly in each small detail of his designs.



Accipiter 1007

Accipiter is a beautiful knife with a very clean design. The blade has a gentle drop point design in CPM-S35VN steel that slices pierces, and cuts like a dream. It is a front flipper with a stunning design for managing any daily cutting chore. Accipiter is equipped with an ergonomic titanium handle with aesthetical inlay on the front side. The blade flipper provides rocketing blade deployment with a reinforced frame lock for strong blade lock up. A comfortably contoured titanium pocket clip completes the outstanding design.

ACCIPITER 1007

K1007A1

Blade Length	3.50"/89mm
Overall Length	8.16"/207.3mm
Blade Thickness	0.14" / 3.5mm
Weight	5.16oz/146.28g
Blade Steel	CPM-S35VN
Handle Material	OD Green Micarta



K1007A2

Blade Length	3.50"/89mm
Overall Length	8.16"/207.3mm
Blade Thickness	0.14" / 3.5mm
Weight	5.16oz/146.28g
Blade Steel	CPM-S35VN
Handle Material	6AL4V Titanium+Carbon fiber



Carbon Fiber Inlay

K1007A3

Blade Length	3.50"/89mm
Overall Length	8.16"/207.3mm
Blade Thickness	0.14" / 3.5mm
Weight	5.16oz/146.28g
Blade Steel	CPM-S35VN
Handle Material	Black Coating 6AL4V Titanium+Copper



K1007A4

Blade Length	3.50"/89mm
Overall Length	8.16"/207.3mm
Blade Thickness	0.14" / 3.5mm
Weight	5.16oz/146.28g
Blade Steel	CPM-S35VN
Handle Material	Titanium+Timascus inlay



ACCIPITER 1007

K1007A5

Blade Length	3.50" / 89mm
Overall Length	8.16" / 207.3mm
Blade Thickness	0.14" / 3.5mm
Weight	5.16oz / 146.28g
Blade Steel	CPM-S35VN
Handle Material	Black Coating 6AL4V Titanium+Copper



Kim Ning

Designer

Kim Ning has over 20 years in the knife industry under his belt. He is a veritable veteran when it comes to bringing his designs to life. Whether creating intricate folders or rugged fixed blades, Kim's attention shows thoroughly in each small detail of his designs.



Mini Accipiter 2007

Mini Accipiter is the scale down version of Accipiter which is a beautiful knife with a very clean design. The blade has a gentle drop point design in CPM-S35VN steel that slices, pierces, and cuts like a dream. It is a front flipper with a stunning design for managing any daily cutting chore. Mini Accipiter is equipped with an ergonomic titanium handle with aesthetic inlay on the front side. The blade flipper provides rocketing blade deployment with a reinforced frame lock for strong blade lock up. A comfortably contoured titanium pocket clip completes the outstanding design.

ACCIPITER 2007

K2007A1

Blade Length	2.9"/74mm
Overall Length	6.73"/171mm
Blade Thickness	0.11"/3.0mm
Weight	3.24oz/91.85g
Blade Steel	CPM-S35VN
Handle Material	6AL4V Titanium+ OD Green Micarta



K2007A2

Blade Length	2.9"/74mm
Overall Length	6.73"/171mm
Blade Thickness	0.11"/3.0mm
Weight	3.24oz/91.85g
Blade Steel	CPM-S35VN
Handle Material	6AL4V Titanium+Carbon Fiber



K2007A3

Blade Length	2.9"/74mm
Overall Length	6.73"/171mm
Blade Thickness	0.11"/3.0mm
Weight	3.24oz/91.85g
Blade Steel	CPM-S35VN
Handle Material	Black Coating 6AL4V Titanium+Copper



K2007A4

Blade Length	2.9"/74mm
Overall Length	6.73"/171mm
Blade Thickness	0.11"/3.0mm
Weight	3.24oz/91.85g
Blade Steel	CPM-S35VN
Handle Material	6AL4V Titanium+ Timascus Inlays+Timascus Clip



ACCIPITER 2007

K2007A5

Blade Length	2.9"/74mm
Overall Length	6.73"/171mm
Blade Thickness	0.11"/3.0mm
Weight	3.24oz/91.85g
Blade Steel	CPM-S35VN
Handle Material	Black Coating 6AL4V Titanium+Copper



Kim Ning

Designer

Kim Ning has over 20 years in the knife industry under his belt. He is a veritable veteran when it comes to bringing his designs to life. Whether creating intricate folders or rugged fixed blades, Kim's attention shows thoroughly in each small detail of his designs.



Kryo 1001

The Kryo series has both a premium and budget-friendly versions differing in materials, blade shape and handle finish. Its blade provides a reliable edge that delivers solid cutting performance in outdoor and urban environments alike. It also comes with a reversible one-piece 3D milled titanium pocket clip for easy carry. The ball bearing system provides smooth opening and a frame or liner lock firmly secures the blade in the open position.

KRYO 1001

K1001A1

Blade Length	3.58" / 91mm
Overall Length	8.08" / 205.3mm
Blade Thickness	0.157" / 4.0mm
Weight	4.31oz/122.3g
Blade Steel	CPM-S35VN
Handle Material	6AL4V Titanium



Orange Peel Finish Titanium Handle

K1001A2

Blade Length	3.58" / 91mm
Overall Length	8.08" / 205.3mm
Blade Thickness	0.157" / 4.0mm
Weight	4.31oz/122.3g
Blade Steel	CPM-S35VN
Handle Material	6AL4V Titanium



Black Stonewashed S35VN

K1001T1

Blade Length	3.58" / 91mm
Overall Length	8.08" / 205.3mm
Blade Thickness	0.157" / 4.0mm
Weight	4.31oz/122.3g
Blade Steel	CPM-S35VN
Handle Material	6AL4V Titanium



Orange Peel Finish Titanium Handle

T1001A1

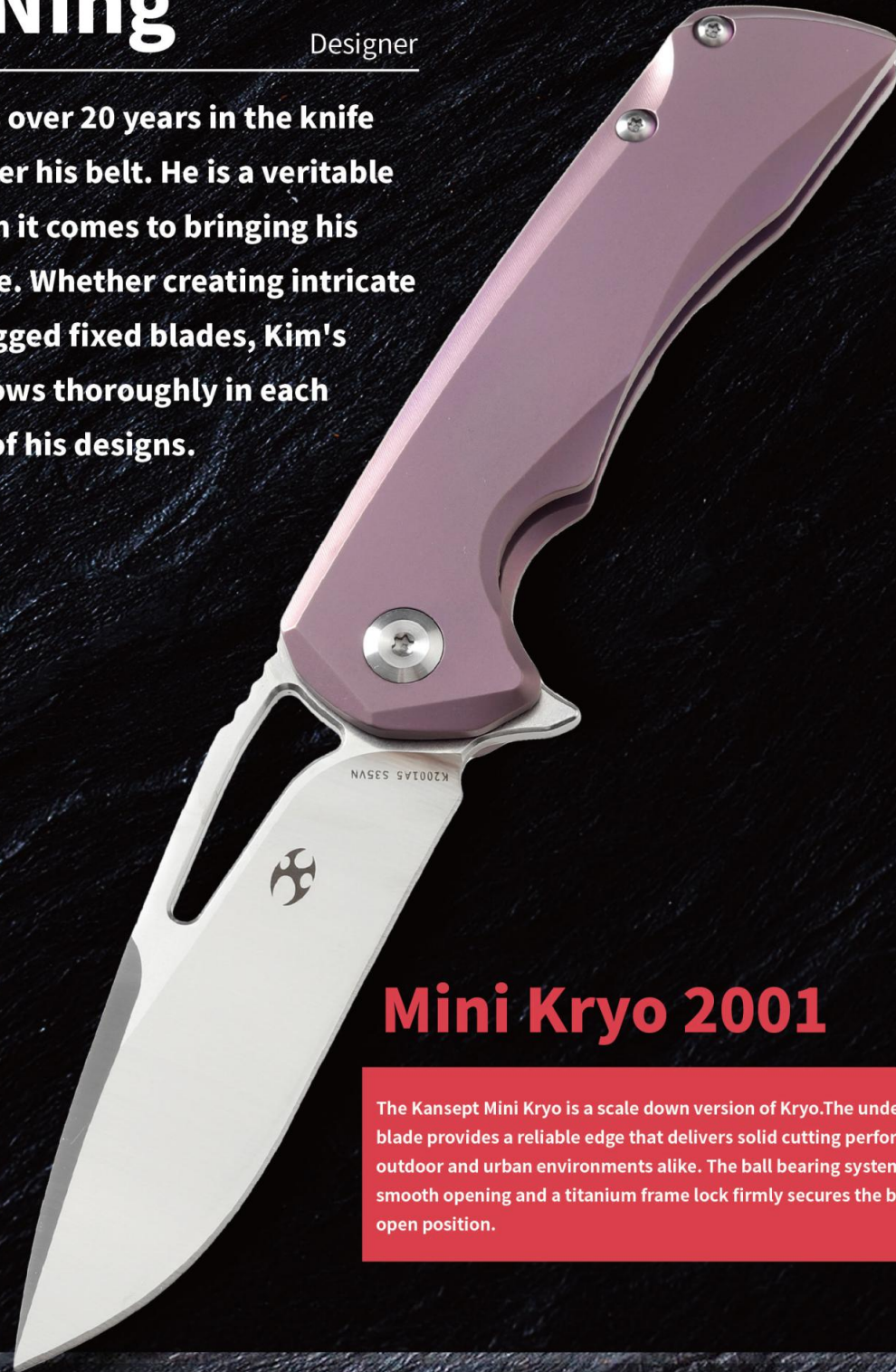
Blade Length	3.58" / 91mm
Overall Length	8.08" / 205.3mm
Blade Thickness	0.157" / 4.0mm
Weight	4.05oz/114.8g
Blade Steel	D2
Handle Material	Brown Micarta



Kim Ning

Designer

Kim Ning has over 20 years in the knife industry under his belt. He is a veritable veteran when it comes to bringing his designs to life. Whether creating intricate folders or rugged fixed blades, Kim's attention shows thoroughly in each small detail of his designs.



Mini Kryo 2001

The Kansept Mini Kryo is a scale down version of Kryo. The under 3" S35VN blade provides a reliable edge that delivers solid cutting performance in outdoor and urban environments alike. The ball bearing system provides smooth opening and a titanium frame lock firmly secures the blade in the open position.

KRYO 1001

T1001A2

Blade Length	3.58" / 91mm
Overall Length	8.08" / 205.3mm
Blade Thickness	0.157" / 4.0mm
Weight	4.05oz/114.8g
Blade Steel	Black Ti-Coated D2
Handle Material	Black G10



T1001A3

Blade Length	3.58" / 91mm
Overall Length	8.08" / 205.3mm
Blade Thickness	0.157" / 4.0mm
Weight	4.37oz/124g
Blade Steel	Black Ti-Coated D2
Handle Material	Carbon Fiber, Titanium Clip



T1001A4 **NEW**

Blade Length	3.58" / 91mm
Overall Length	8.08" / 205.3mm
Blade Thickness	0.157" / 4.0mm
Weight	4.05oz/114.8g
Blade Steel	Black Ti-Coated D2
Handle Material	Dark Green Micarta



T1001B1 **NEW**

Blade Length	3.58" / 91mm
Overall Length	8.08" / 205.3mm
Blade Thickness	0.157" / 4.0mm
Weight	4.05oz/114.8g
Blade Steel	Black Ti-Coated D2
Handle Material	Brown Micarta



MINI KRYO 2001

K2001A1

Blade Length	2.9" / 74mm
Overall Length	6.64" / 168.7mm
Blade Thickness	0.11"/3.0mm
Weight	2.68oz/76g
Blade Steel	CPM-S35VN
Handle Material	6AL4V Titanium



K2001A2

Blade Length	2.9" / 74mm
Overall Length	6.64" / 168.7mm
Blade Thickness	0.11"/3.0mm
Weight	2.68oz/76g
Blade Steel	CPM-S35VN
Handle Material	6AL4V Titanium



K2001A5

Blade Length	2.9" / 74mm
Overall Length	6.64" / 168.7mm
Blade Thickness	0.11"/3.0mm
Weight	2.68oz/76g
Blade Steel	CPM-S35VN Blade + Flipper
Handle Material	Purple Anodized 6AL4V Titanium Handle



K2001B1

Blade Length	2.9" / 74mm
Overall Length	6.64" / 168.7mm
Blade Thickness	0.11"/3.0mm
Weight	2.65oz/75g
Blade Steel	CPM-S35VN
Handle Material	6AL4V Titanium



MINI KRYO 2001

K2001B2

Blade Length	2.9" / 74mm
Overall Length	6.64" / 168.7mm
Blade Thickness	0.11"/3.0mm
Weight	2.65oz/75g
Blade Steel	CPM-S35VN
Handle Material	6AL4V Titanium



K2001B3

Blade Length	2.9" / 74mm
Overall Length	6.64" / 168.7mm
Blade Thickness	0.11"/3.0mm
Weight	2.65oz/75g
Blade Steel	Black Stonewashed S35VN
Handle Material	6AL4V Titanium



K2001B4

Blade Length	2.9" / 74mm
Overall Length	6.64" / 168.7mm
Blade Thickness	0.11"/3.0mm
Weight	2.65oz/75g
Blade Steel	CPM-S35VN Blade+Flipper
Handle Material	Orange Peel 6AL4V Titanium Handle



Orange Peel Titanium Handle